

SL-M18 Stratlock™ Male 18kg

INDUSTRY FIT:

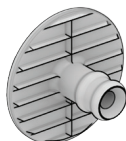


SPECIFICATIONS:

STRATLOCK SL RANGE

The SL-M18 attaches to the panel, and mounts into either SL-FA, SL-SFA or SL-FB for rapid mounting of heavy panels to aluminium or steel extrusion framework. Featuring a two-stage engagement head, the SL-M18 engages into the new solid internal load chassis to give 4mm supported movement in any direction before locking into place. Option to fix into panel with #8 screw, or Fastmount SuperGroove Adhesive. Combined with the SL-FA, SL-SFA or SL-FB, the SL-M18 has an 18kg pull out load and high shear strength. The distance between the panel and substrate when installed is 10.5mm at the first click, and 5mm when pressed into final position.

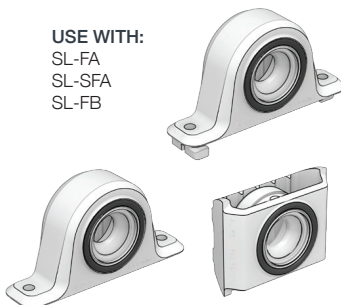
SL-M18 18kg



NEW PRODUCT

USE WITH:

SL-FA
SL-SFA
SL-FB



MATERIAL:

White glass-filled nylon

MORE INFO:

Installation Guide SL-FA,SL-SFA, SL-FB
Clip Layout Guide TD-15

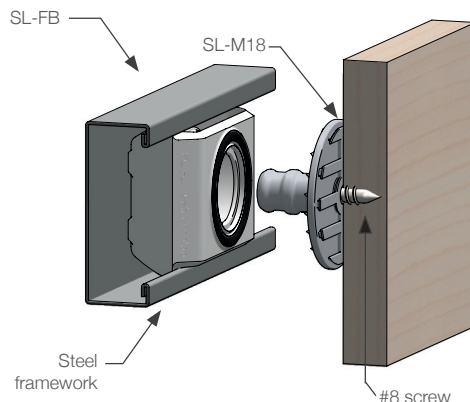
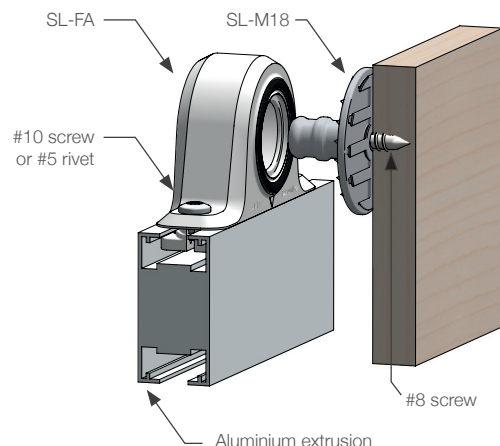
BENEFITS

- Strongest mounting available from Fastmount
- Supported movement of the panel 4mm in any direction before locking into final position.
- Screw fix with #8 screw or SuperGroove Adhesive fix
- No special tools required
- Acoustic isolation between panel and frame
- Fits into SL-FA, SL-SFA and SL-FB
- 18kg pull out load
- High shear strength
- #8 screw fix through centre of clip for added durability

APPLICATIONS

- Commercial interior fit out
- Mounting heavier ceiling and wall panels
- Hotels, hospitals, retail, residential
- Superyacht deckheads

INSTALLATION: Partially exploded through section showing typical installation method



The Fastmount® multi-award winning system has revolutionized the mounting of panels. Panels can easily be removed and refitted in any sequence time after time. For further information or technical support contact: info@fastmount.com

www.fastmount.com

