

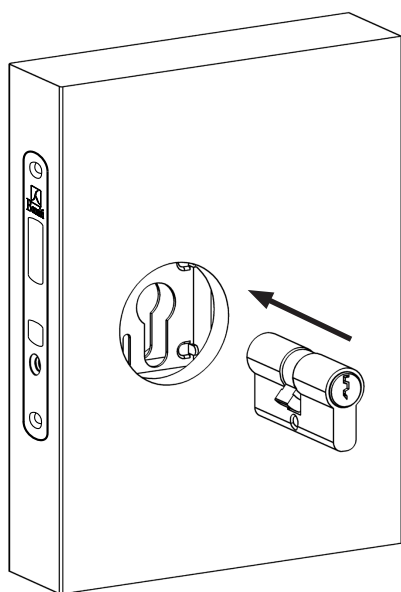
	on demand	
160 x 16 mm	190 x 18 mm	196 x 18 mm
mod. H20	mod. H30	mod. H35

	on demand	
160 x 16 mm	190 x 18 mm	196 x 18 mm
mod. H21	mod. H31	mod. H36

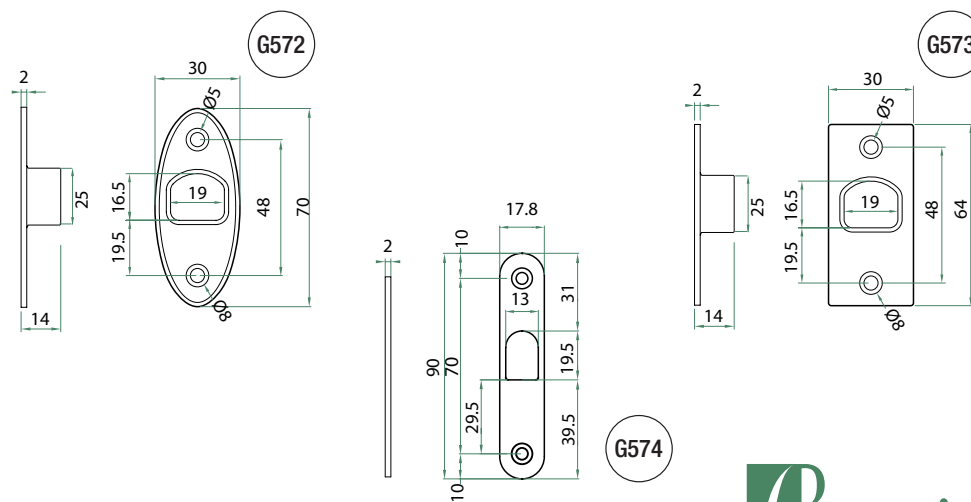
	on demand	
160 x 16 mm	190 x 18 mm	196 x 18 mm
mod. H22	mod. H32	mod. H37

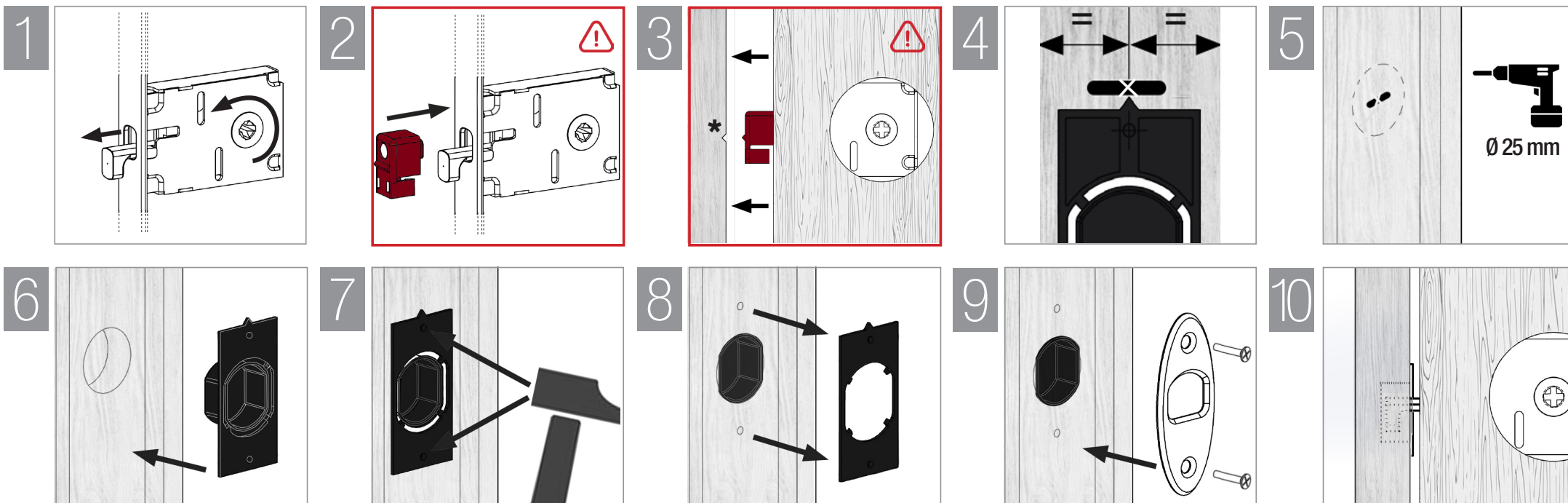


ATTENZIONE: nelle versioni “cilindro” della serratura, si raccomanda di utilizzare cilindri con camma DIN 30° e di installarli, come da immagine, con la camma rivolta verso la parte anteriore della serratura.

ATTENTION: in “cylinder” versions locks, it is recommended to use cylinders with cam DIN 30° and to install them, as per image, with lever in forefront position.

CONTROPIASTRE STRIKING PLATES





! ATTENZIONE

É fondamentale utilizzare la dima rossa (fase 2) inclusa nella confezione per la posa ottimale, individuando con precisione il punto di foratura per il pozzetto dell'incontro. **Non sbattere violentemente la porta quando si esegue la fase 3 onde non danneggiare lo stipite, la porta o la serratura!**

I passaggi sopradescritti si riferiscono all'utilizzo delle contropiastre G572 e G573.

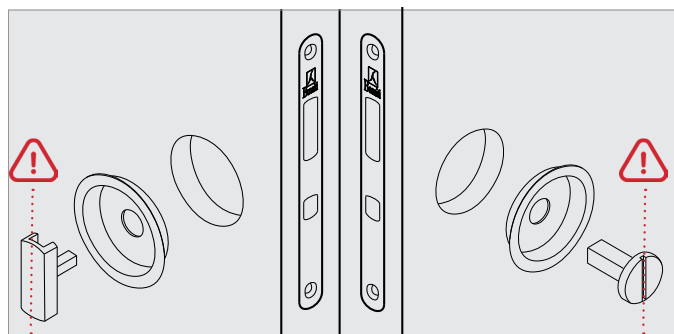
! WARNING

For the best installation, it is highly recommended to use the red jig (step 2) included in the package; it allows to identify the drilling point for the pocket of the striking plate.

Do not knock the door too hard when performing step 3 in order to avoid any damage to the frame, to the door or to the lock!

The steps refer to the use of G572 and G573 striking plates.

INSTALLAZIONE DEL KIT / KIT INSTALLATION



ATTENZIONE

Per la riuscita del montaggio montare contemporaneamente il pomolo e la vite d'emergenza allineati in verticale o in orizzontale!

WARNING

For the successful assembly please mount both the knob and the emergency button aligned in horizontal or vertical position!

SMONTAGGIO / REMOVAL

