

3.2 SP-X

Indextrut perforated cantilever

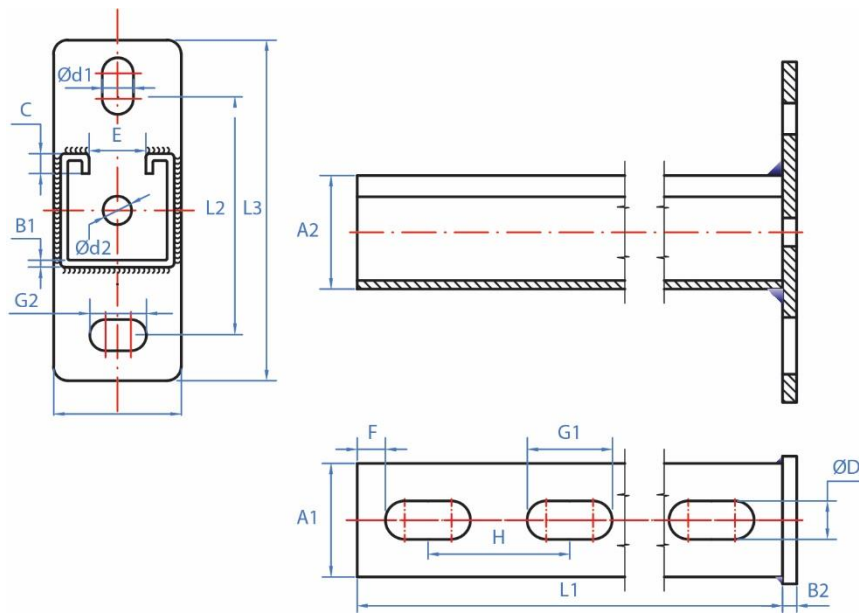


Material	Coating
	
Steel	Zinc-plated

Installation Data

Code	A1	A2	B1	B2	C	ØD	Ød1	Ød2	E	F	G1	G2	H	L1	L2	L3												
SPX412115	41	21	2,5	5	7	14	13	10	22,3	10	30	22	50	150	70	110												
SPX412130														300														
SPX412145														450														
SPX414115		41												41	2,5	5	7	14	13	10	22,3	10	30	22	50	150	90	132
SPX414130																										300		
SPX414145																										450		
SPX414160																										600		
SPX414175																										750		
SPX414110		1000																										

Drawing



Resistances

Check section 5. LOADS AND DESIGN HYPOTHESIS