

MEZZO CILINDRO

**CARATTERISTICHE COSTRUTTIVE:**

Corpo in alluminio ad alta resistenza - Barilotto in ottone nichelato con guida-chiave - Perni e controperni in acciaio inox - Molle in acciaio inox - Camma verticale in acciaio autolubrificante - Chiavi in ottone nichelato.

FUNZIONAMENTO:

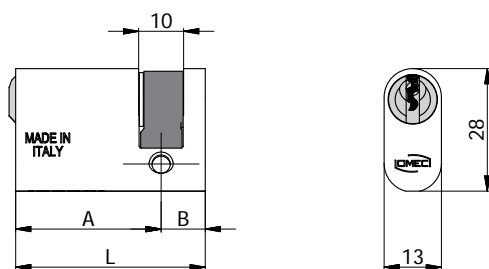
Rotazione della chiave di 360°.






PARTI IN DOTAZIONE:

3 chiavi.

VARIANTI A RICHIESTA:

Impianti speciali KA-MK-GMK-CL.



COD.	EX COD.	L	A	B					
141.27.10	141/03 L	37	27	10	5	103/05	0,07	1	10
141.33.10	141/05 L	43	33	10	5	103/05	0,08	1	10
141.43.10	141/07 L	53	43	10	5	103/05	0,09	1	10
141.**.10.N	Finitura Nera a richiesta								
141.**.10.T	Finitura Ottone a richiesta								

