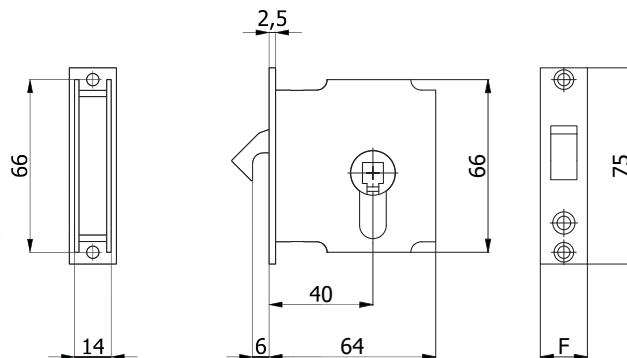
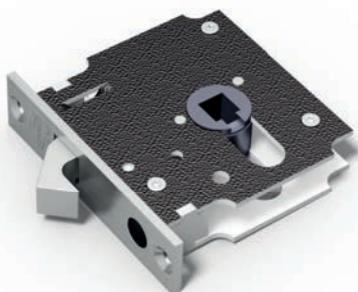


## GANCIO CON QUADRO MANIGLIA



## CARATTERISTICHE COSTRUTTIVE:

Scatola e coperchio in acciaio zincato e plastificato - Frontale in acciaio inox - Gancio in lega speciale nichelata - Ingegno maniglia in acciaio brunito foro  $\varnothing$  8 mm.

## FUNZIONAMENTO:

Gancio comandato dalla maniglia.

## MANO:




Unica.

## PARTI IN DOTAZIONE:

/



Ve

COD.	F	Mandate			
1246Q	18	1	0,17	-	50
1246Q/F16	16	1	0,17	-	50