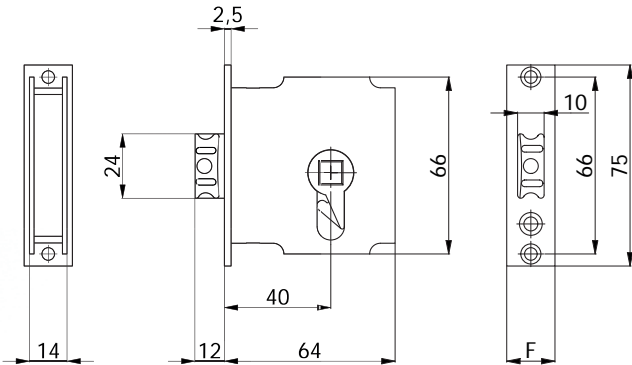


SCROCCO CON QUADRO MANIGLIA



CARATTERISTICHE COSTRUTTIVE:

Scatola e coperchio in acciaio zincato e plastificato - Frontale in acciaio inox - Scrocco anti-rumore in lega speciale nichelata - Ingegno maniglia in lega speciale nichelata foro \varnothing 8 mm.

FUNZIONAMENTO:




Scrocco comandato dalla maniglia.

MANO:

Reversibile.

PARTI IN DOTAZIONE:

/

COD.	F	Mandate			
1242	18	-	0,20	-	50
1242/F16	16	-	0,20	-	50