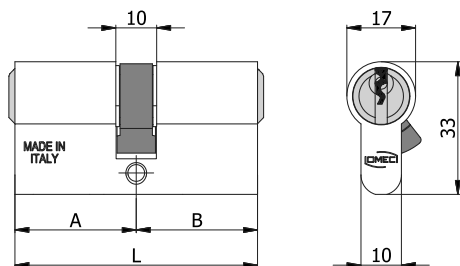


DOPPIO CILINDRO



CARATTERISTICHE COSTRUTTIVE:

Corpo in alluminio ad alta resistenza - Barilotti in ottone nichelato con guida-chiave - Perni e controperni in acciaio inox - Molle in acciaio inox - Camma DIN disassata di 30° in acciaio autolubrificante - Chiavi in ottone nichelato.

FUNZIONAMENTO:






Rotazione della chiave di 360° - Le chiavi sono dipendenti e non possono azionare il cilindro se dall'altro lato é stata inserita e ruotata la chiave.

PARTI IN DOTAZIONE:

3 chiavi.

VARIANTI A RICHIESTA:

Impianti speciali KA-MK-GMK-CL.

| COD. | L | A | B |  |  |  |  |  |
|----------|-----|------|------|---|---|---|---|---|
| 120/01 L | 40 | 20 | 20 | 3 | 105/03 | 0,11 | 1 | 10 |
| 120/02 L | 47 | 23,5 | 23,5 | 4 | 105/04 | 0,12 | 1 | 10 |
| 120/03 L | 54 | 27 | 27 | 5 | 105/05 | 0,13 | 1 | 10 |
| 120/04 L | 60 | 30 | 30 | 5 | 105/05 | 0,14 | 1 | 10 |
| 120/05 L | 60 | 27 | 33 | 5 | 105/05 | 0,14 | 1 | 10 |
| 120/06 L | 70 | 35 | 35 | 5 | 105/05 | 0,15 | 1 | 10 |
| 120/07 L | 70 | 27 | 43 | 5 | 105/05 | 0,15 | 1 | 10 |
| 120/08 L | 80 | 40 | 40 | 5 | 105/05 | 0,17 | 1 | 10 |
| 120/09 L | 80 | 27 | 53 | 5 | 105/05 | 0,17 | 1 | 10 |
| 120/10 L | 64 | 27 | 37 | 5 | 105/05 | 0,14 | 1 | 10 |
| 120/11 L | 65 | 30 | 35 | 5 | 105/05 | 0,14 | 1 | 10 |
| 120/12 L | 96 | 43 | 53 | 5 | 105/05 | 0,20 | 1 | 5 |
| 120/13 L | 106 | 53 | 53 | 5 | 105/05 | 0,21 | 1 | 5 |
| 120/14 L | 70 | 30 | 40 | 5 | 105/05 | 0,15 | 1 | 10 |
| 120/15 L | 75 | 30 | 45 | 5 | 105/05 | 0,16 | 1 | 10 |
| 120/16 L | 75 | 35 | 40 | 5 | 105/05 | 0,16 | 1 | 10 |
| 120/17 L | 80 | 35 | 45 | 5 | 105/05 | 0,17 | 1 | 10 |
| 120/18 L | 80 | 30 | 50 | 5 | 105/05 | 0,17 | 1 | 10 |
| 120/19 L | 85 | 40 | 45 | 5 | 105/05 | 0,17 | 1 | 10 |
| 120/20 L | 90 | 40 | 50 | 5 | 105/05 | 0,18 | 1 | 5 |
| 120/21 L | 90 | 45 | 45 | 5 | 105/05 | 0,18 | 1 | 5 |
| 120/22 L | 100 | 50 | 50 | 5 | 105/05 | 0,20 | 1 | 5 |
| 120/23 L | 85 | 30 | 55 | 5 | 105/05 | 0,17 | 1 | 10 |
| 120/24 L | 90 | 30 | 60 | 5 | 105/05 | 0,18 | 1 | 5 |
| 120/25 L | 95 | 30 | 65 | 5 | 105/05 | 0,19 | 1 | 5 |
| 120/26 L | 100 | 30 | 70 | 5 | 105/05 | 0,20 | 1 | 5 |
| 120/27 L | 110 | 30 | 80 | 5 | 105/05 | 0,21 | 1 | 5 |
| 120/28 L | 85 | 35 | 50 | 5 | 105/05 | 0,17 | 1 | 10 |
| 120/29 L | 90 | 35 | 55 | 5 | 105/05 | 0,18 | 1 | 5 |
| 120/30 L | 95 | 35 | 60 | 5 | 105/05 | 0,19 | 1 | 5 |
| 120/31 L | 100 | 35 | 65 | 5 | 105/05 | 0,20 | 1 | 5 |
| 120/32 L | 95 | 40 | 55 | 5 | 105/05 | 0,19 | 1 | 5 |
| 120/33 L | 100 | 40 | 60 | 5 | 105/05 | 0,20 | 1 | 5 |
| 120/34 L | 110 | 40 | 70 | 5 | 105/05 | 0,21 | 1 | 5 |
| 120/35 L | 120 | 40 | 80 | 5 | 105/05 | 0,23 | 1 | 5 |
| 120/36 L | 95 | 45 | 50 | 5 | 105/05 | 0,19 | 1 | 5 |
| 120/37 L | 100 | 45 | 55 | 5 | 105/05 | 0,20 | 1 | 5 |
| 120/38 L | 110 | 50 | 60 | 5 | 105/05 | 0,21 | 1 | 5 |
| 120/39 L | 120 | 60 | 60 | 5 | 105/05 | 0,23 | 1 | 5 |
| 120/40 L | 120 | 50 | 70 | 5 | 105/05 | 0,23 | 1 | 5 |
| 120/41 L | 120 | 30 | 90 | 5 | 105/05 | 0,23 | 1 | 5 |
| 120/42 L | 105 | 30 | 75 | 5 | 105/05 | 0,21 | 1 | 5 |
| 120/43 L | 105 | 45 | 60 | 5 | 105/05 | 0,21 | 1 | 5 |
| 120/44 L | 115 | 50 | 65 | 5 | 105/05 | 0,22 | 1 | 5 |
| 120/45 L | 110 | 55 | 55 | 5 | 105/05 | 0,21 | 1 | 5 |
| 120/46 L | 110 | 45 | 65 | 5 | 105/05 | 0,21 | 1 | 5 |