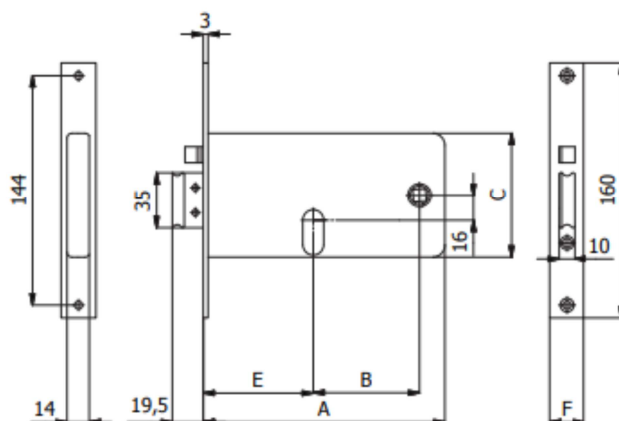
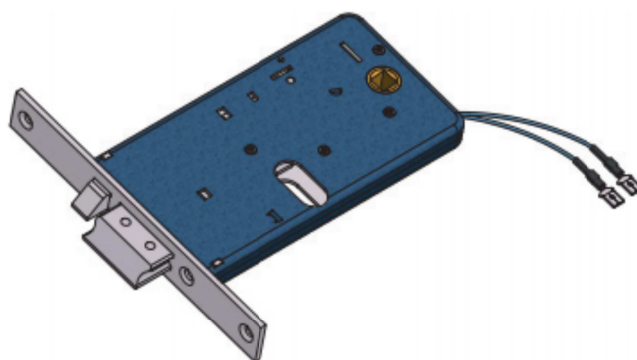


SCHEDA TECNICA



SERRATURA ELETTRICA PER FASCE _77 OMECE



COD.	E	F	A	B	C	mandate throws	kg		
377	60	16	133	47	84	1	0,55	1	10
377/F22	60	22	133	47	84	1	0,58	1	10
777	70	16	153	67	78	1	0,59	1	10
777/F22	70	22	153	67	78	1	0,61	1	10
877	80	16	163	67	78	1	0,65	1	10
877/F22	80	22	163	67	78	1	0,67	1	10